

New, modern assisted living residence now open! Take a tour.

Assisted Living

Enjoy support and your independence.

All-Inclusive, Monthly Care Rate

An assessment prior to admission will determine your all-inclusive care level rate. You'll appreciate the array of quality services and amenities included.

Access to Caregivers 24 Hours a Day

Receive help with personal cares, medication management and administration, three nutritious meals, social activities, housekeeping, and laundry.

Nursing and Pharmacy Services

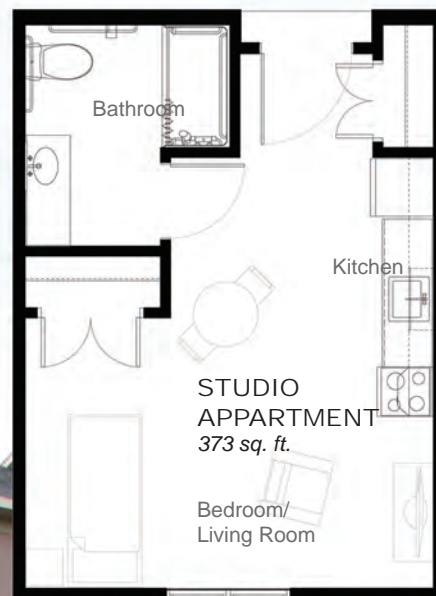
A nurse consultant is available to address general health concerns. We work with the pharmacy and your physician to ensure accurate delivery of care.

Physical, Occupational, and Speech Therapy

Out-patient therapy services are easily coordinated and provided on-site by Dove Healthcare therapists.

Serene Setting with Beautiful Views

Enjoy the scenery out every apartment window. Watch the visiting wildlife, relax on the patio, and visit with friends in the courtyard.



24 APARTMENTS

Nine one bedroom apartments on the first floor and 11 on the second floor

Four studio apartments on the second floor





Maintain Your Independence and Enjoy Support When You Need It at Dove Healthcare – Osseo

Our Residential Care Apartment Complex (RCAC) features 24 apartments and is certified by Wisconsin's Bureau of Health Services, Division of Quality Assurance. We accept private pay and the Medical Assistance Family Care Program as payer sources. Our caregivers will support you in maintaining your highest level of independence for as long as possible by providing daily nursing and supportive services, as well as opportunities for socialization and recreation.

ASSISTED LIVING MONTHLY APARTMENT RATE:

1-bedroom: \$1,150 Studio: \$680

Services and amenities included in your apartment rate:

- Apartments feature a wheelchair accessible bathroom with walk-in shower, two closets, a full kitchen with electric stove and refrigerator / freezer, and personal heat and A/C controls
- Advanced call system for easy access to on-site Resident Assistants 24/7
- Three nutritious meals, seven days a week
- A variety of social activities and community outings
- Housekeeping, laundry, and maintenance services
- Heat, electric, water, and WI-FI
- Indoor postal service, trash, and recycling facilities
- A community room for meetings, activities, entertainment, and exercise
- A private dining room for family gatherings
- Outdoor patio with beautiful views and scenery

ASSISTED LIVING MONTHLY CARE RATE:

Care Level 1 - \$2,300 Care Level 2 - \$2,700 Care Level 3 - \$3,100

Prior to admission, an assessment will determine your care level. You can count on paying the same care rate each month, unless you have a change in condition which necessitates a need for a higher or lower care level.

Per state regulations, RCAC residents may receive up to a maximum of 28 hours of care per week, including nursing and supportive services.

Visits from a nurse consultant are available as needed to address general health concerns and a nurse is on-call 24/7.

Care Level 1 - \$2300

- Basic assistance with activities of daily living (i.e. dressing, grooming, bathing, toileting, transferring, and ambulating)
- Must be independent with medication administration; the ability to independently and safely manage a medication planner also qualifies at care level 1.

Care Level 2 - \$2700

- Supervision beyond basic assistance with activities of daily living to ensure safety (i.e. dressing, grooming, bathing, toileting, transferring, and ambulating)
- Medication administration provided by trained assisted living staff

Care Level 3 - \$3100

- Supervision beyond basic assistance with activities of daily living to ensure safety (i.e. dressing, grooming, bathing, toileting, transferring, and ambulating)
- Medication administration provided by trained assisted living staff
- Catheter or ostomy management
- Additional nursing services, such as injections, wound care management (i.e. assessment, dressing changes), oxygen therapy (managed by staff), and monitoring of complex medical conditions

Services not included in your apartment or care rate:

- Guest meals: \$4.00 per person
- Telephone: service must be set up and coordinated by resident / family
- Cable: \$52.17 per month (service must be set up and coordinated by resident / family)
- Prescription drugs, nutritional supplements, and medical equipment
- Physical, occupational, and speech therapy (therapy services can be provided on-site by Dove Healthcare therapists)
- Beauty / barber services
- Personal care supplies (i.e. toothpaste, shampoo, incontinence products)

Rates
Effective
Jan. 1, 2018